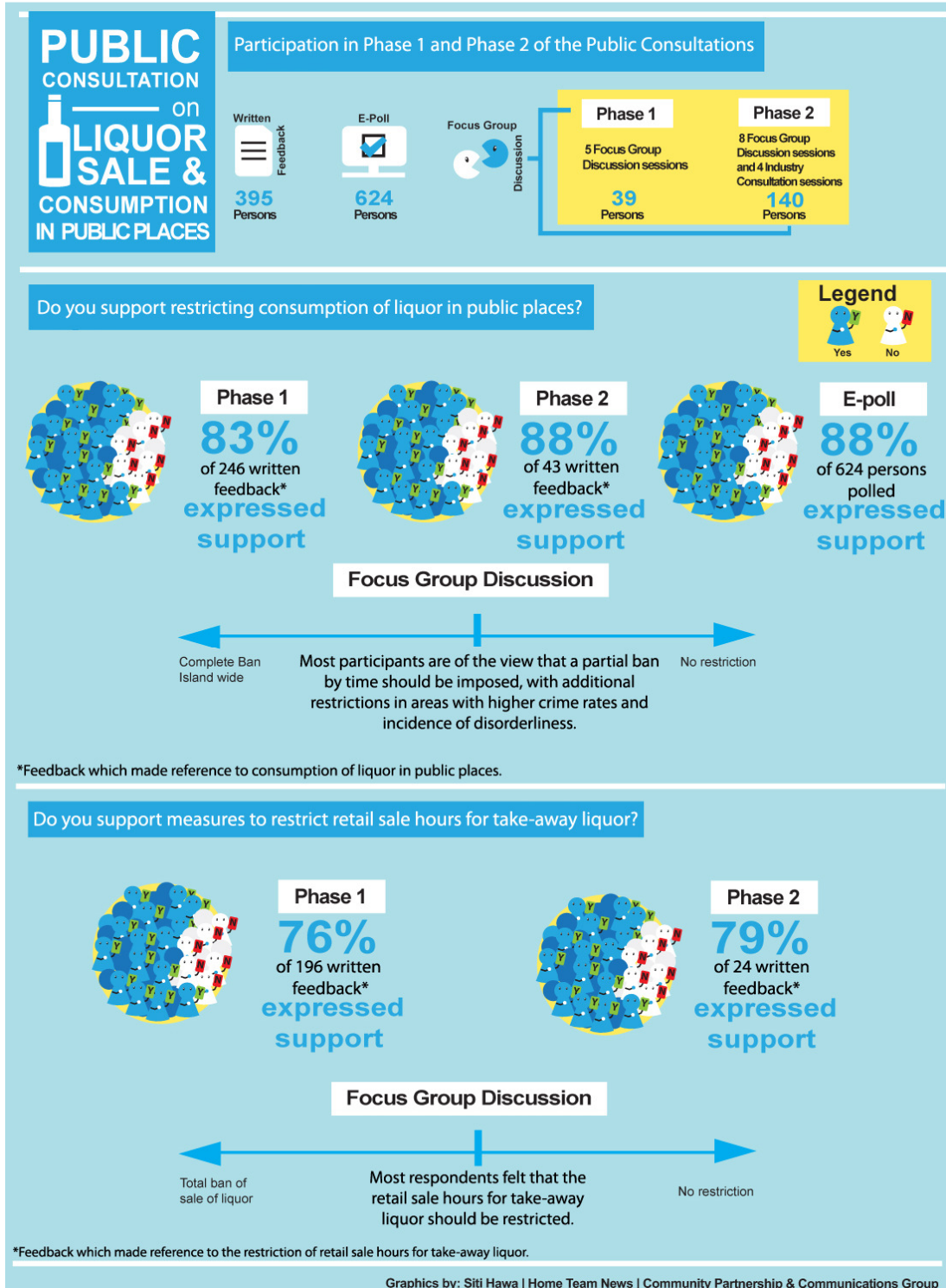
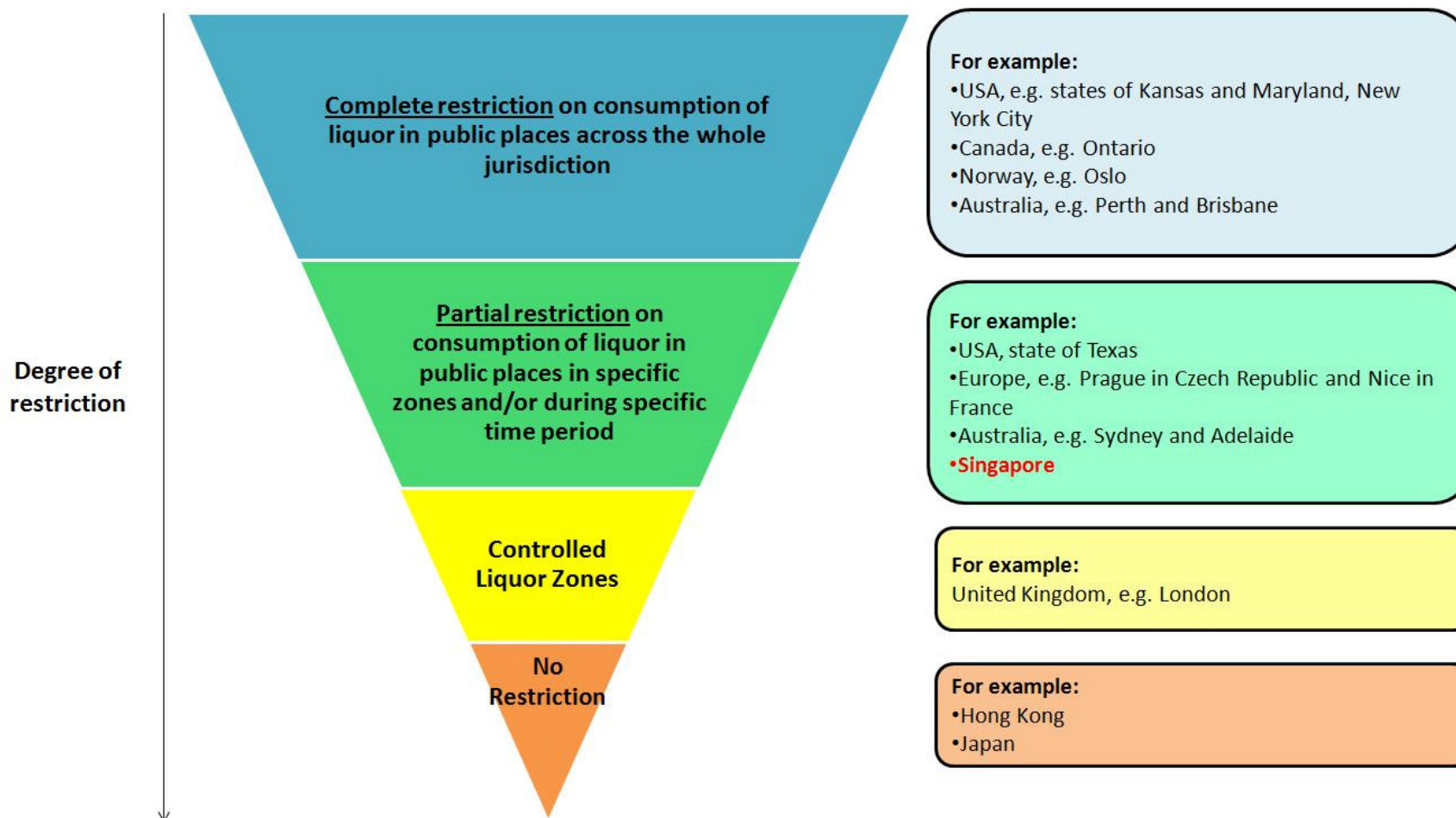


ANNEX A: Summary of MHA's public consultation exercises



ANNEX B: Comparison of liquor control measures across overseas jurisdictions








Comparison of restrictions with other jurisdictions on retail sale hours for take-away liquor and consumption of liquor in public places

Country	Retail sale hours for take-away liquor	Consumption of liquor in public places
Singapore	<p>Retail sale hours for take-away liquor will end at 10.30pm. Extension of retail sale hours beyond 10.30pm may be granted on a case-by-case basis.</p> <p>Members of the public can continue to purchase liquor but only for consumption in licensed premises such as restaurants, coffee shops or bars, during the hours stipulated in their licences.</p>	<p>The consumption of liquor in public places will not be allowed from 10.30pm to 7.00am every day.</p> <p>However, members of the public can continue to consume liquor at home during the restricted hours, and at approved events and within licensed premises such as restaurants, coffee shops or bars, in accordance with the hours stipulated in their permits or licences.</p>
US	<p>Various state and local government laws govern the manufacture/ sale of liquor.</p> <p>In most states, there are controls over retail sale hours for take-away liquor. For example, in the state of Kansas, retail sale is generally permitted up to 2.00am. In Washington D.C, licensed premises may serve liquor up to 4.00am, but retail sale hours for take-away liquor end at midnight. In the states of New Jersey and Pennsylvania, take-away sale is generally allowed up to 10.00pm. In these states, extension of retail sale hours for take-away liquor may be allowed.</p>	<p>In various cities and states in the US (e.g. New York City, Kansas, and Maryland), the laws prohibit the consumption of liquor in public places, across the whole jurisdiction at all times. Liquor consumption is only allowed in permitted premises such as bars.</p> <p>In the state of Texas, liquor-free zones were designated at problematic areas. There were also state laws that prohibit consumption of liquor in public places across the state after a certain time at night.</p>
UK	Retail sale hours for take-away liquor generally end at	In the UK (e.g. London), people can generally

Country	Retail sale hours for take-away liquor	Consumption of liquor in public places
	10.00pm.	consume liquor in public places. However, the Designated Public Places Orders give Police the powers to require people to surrender opened containers of liquor within a designated zone.
Australia	<p>In New South Wales (e.g. Sydney), retail sale hours for take-away liquor to end at 10.00pm. Licensed premises serving liquor to patrons can only do so till 3.00am.</p> <p>In Queensland (e.g. Brisbane), retail sale hours for take-away liquor end at 10.00pm. Licensed premises may serve liquor to patrons up to midnight, with extensions granted in some cases.</p>	<p>It is generally illegal to consume liquor in public places, except for licensed premises and designated liquor zones, though these restrictions vary across states.</p> <p>In New South Wales (e.g. Sydney), certain hotspots or places with high incidence of liquor-induced violence and disamenities may be designated as “alcohol-free zones”. Public consumption of liquor and possession of open bottles of liquor within these zones are not allowed at all times, except at licensed premises, such as bars.</p> <p>In Queensland (e.g. Brisbane), consumption of liquor is not allowed at all public places, except at licensed premises or where approved.</p>

ANNEX C: Key features of the Liquor Control (Supply and Consumption) Bill

Proposed Measures to Control Supply and Consumption of Liquor

Restriction on consumption of liquor in public places	Restriction on retail sale hours for take-away liquor	Designation of Liquor Control Zones	Transfer of provisions for public drunkenness	Transfer of liquor licensing provisions from Customs Act
 <p>Consumption of liquor in public places will not be allowed between 10.30pm and 7.00am.</p> <p>However, members of the public can continue to consume liquor at home during the restricted hours, and at approved events and within licensed premises such as restaurants, coffee shops or bars in accordance with the hours stipulated in their permits or licences.</p>	 <p>Under the new licensing measures, retail sale hours for take-away liquor will end at 10.30pm.</p> <p>Extension of sale hours beyond 10.30pm may be granted on a case-by-case basis.</p> <p>Members of the public can continue to purchase liquor but only for consumption in licensed premises such as restaurants, coffee shops or bars during the hours stipulated in their licences.</p>	 <p>Specified areas in Geylang and Little India will be designated as Liquor Control Zones.</p> <p>Stricter restrictions on the supply and consumption of liquor, substantially similar to those under the Public Order (Additional Temporary Measures Act, will be implemented in these zones.</p>	 <p>Existing offences related to public drunkenness will be transferred from current laws to the new legislation.</p>	 <p>A Licensing Officer will be appointed to make regulatory decisions while a Liquor Appeal Board will hear appeals against regulatory decisions.</p>

Graphics by: Siti Hawa & Mabel Yap | Home Team News | Ministry of Home Affairs

ANNEX D: Frequently-Asked Questions on the Consumption of Liquor in Public Places

The Liquor Control (Supply and Consumption) Bill will provide the legislative framework to regulate the retail sale hours for take-away liquor and the consumption of liquor in public places to address the effects of public drunkenness. Under the new Bill, the consumption of liquor in public places will not be allowed from **10.30pm to 7.00am** every day. Similarly, the retail sale hours for take-away liquor will also end at 10.30pm throughout Singapore, the same time as the restriction on the consumption of liquor in public places. Extension of retail sale hours for take-away liquor beyond 10.30pm may be granted on a case-by-case basis.

However, members of the public can continue to consume liquor at home during the restricted hours, and at approved events and within licensed premises such as restaurants, coffee shops or bars, in accordance with the hours stipulated in their permits or licences.

What is a public place?

A public place refers to any place (whether open-air or enclosed) to which members of the public have access such as parks, void decks, pavements. It excludes residences.

Can I serve/consume liquor at the following places between 10.30pm and 7.00am?

Licensed premises (e.g. restaurants, coffee shops and bars)	Yes, licensed premises which have a valid liquor licence, such as restaurants, coffee shops and bars, can continue to sell liquor, and customers can consume the liquor within the premises during the hours stipulated in their licences.
Barbeque Pit in parks	<p>You will need a liquor consumption permit, on top of the NParks permit for the barbeque pit, if you intend to consume liquor at your barbeque gathering beyond 10.30pm. The applicant is responsible to ensure that public order is maintained.</p> <p>Details of the application process will be made known at a later date.</p>
HDB Void Deck / Corridor	Consumption of liquor will not be allowed in HDB void decks and corridors between

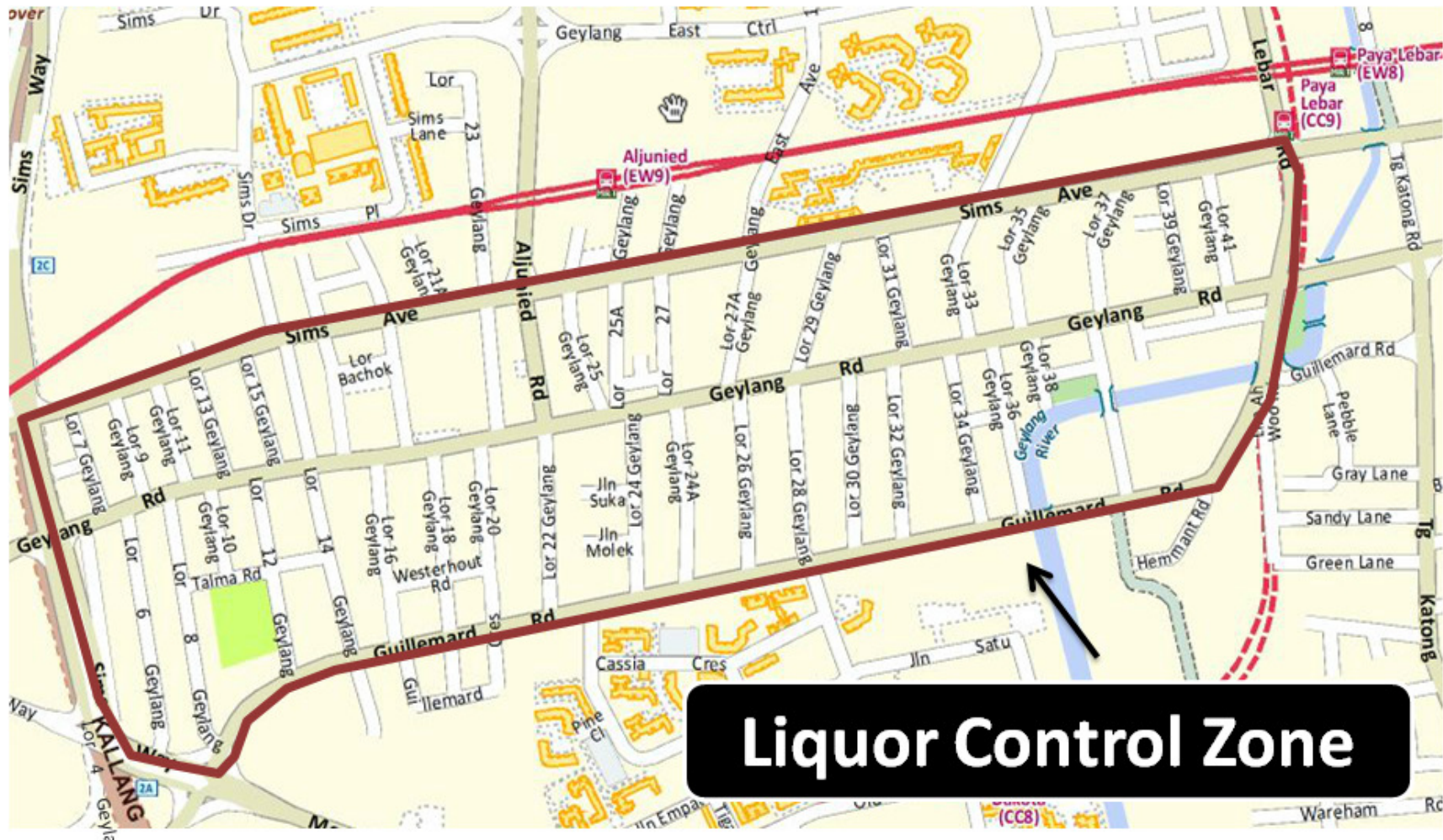
	<p>10.30pm and 7.00am. The timing is aligned with community events in residential estates which conclude at 10.30pm, to minimise noise and disturbance to the surrounding residents. Most shops will also be closed by then.</p> <p>You will need a liquor consumption permit if you intend to consume liquor at an event or gathering at the HDB void deck or corridor beyond 10.30pm. The applicant is responsible to ensure that public order is maintained.</p>
Public Events (e.g. New Year Countdown Party)	<p>Organisers of such events in a public place will need a permit to supply and/or consume liquor in a designated area beyond 10.30pm. The organiser is responsible to ensure that public order is maintained.</p>

Annex E: Proposed boundaries for specified areas in Little India and Geylang to be designated as Liquor Control Zones

Little India



Geylang



The HOME TEAM – Making Singapore our Safe and Secure Best Home